



ECHO® Series

[Schedule](#)

[Week 4 Recording & Slides](#)

Resources

[Microlearning](#)

[Fast Fives](#)

[Pain BC Registration](#)

[Member List](#)

[Video | Trauma Informed Care & Repairing Relationships](#)

[Video | PCN Pain Rounds](#)

[Event Calendar](#)

Upcoming Events

May 30- June 3 |
[Rural Health Week](#)

June 2 | [Chronic Abdominal Pain & Cancer SCN Pathways](#)

June 17 | [Pain AB: To Be or Not to Be with Pain: Resources to Guide Practice](#)

Gear Up for Your Chance to Win at Tonight's Collab Forum

Before the Battle of Alberta, join us for tonight's session: "[Gender & Chronic Pain – Women's Experiences Through an Intersectional Lens](#)" with Dr. Fiona Webster. Wear your sports swag at tonight's session for a chance to win a \$25 anything gift card!



NOTE TIME CHANGE: This Collab Forum starts at 5:00 PM!

Register

This one-credit-per-hour Group Learning program has been certified by the College of Family Physicians of Canada for up to 1 Mainpro+® credits.

Case Submissions Needed!

Learn from and with your colleagues as you share complex cases and experiences related to chronic pain.



The Chronic Pain Gains hub team of experts will facilitate discussion in a supportive environment at the remaining ECHO® sessions (June 1 & 15).

Submit a Case

This one-credit-per-hour Group Learning program has been certified by the College of Family Physicians of Canada for up to 1 Mainpro+® credits.

Next Week - Honour the Rural Health Care Providers in your Community

Join us in supporting [Rural Health Professions Action Plan \(RhPAP\)](#) **Rural Health Week, May 30-June 3, 2022**. Show your appreciation for the contributions of the health care providers whose abilities enhance the quality of life in rural Alberta. We are grateful to have many rural health care providers take part in the CMN. Thank you for your support and effort to continue to provide health care in Alberta's rural communities.

Get social! RhPAP has provided a [tool kit](#) to help share the message! Help spread awareness on social media during #ABRuralHealthWeek.

Panel Discussion — *Kímmapiiyipitssini: The Meaning of Empathy*

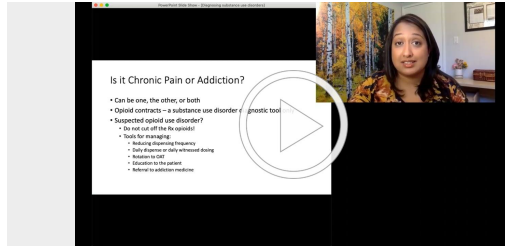
The CMN invites you to screen this award-winning film, *Kimmapiiyipitssini: The Meaning of Empathy* which has resonated with many healthcare providers across settler and First Nation communities. As part of honouring National Indigenous History Month, the CMN is screening the film from June 3-10.

Join us for a panel discussion on **Wednesday, June 8 at 7:00 PM MT** with Dr. Esther Tailfeathers and panel guests. Extend this invitation to your team and peers to experience the film together.



Register

Resources of the Month



Microlearning: Diagnosing a Substance Use Disorder

In less than 10 minutes, [learn how](#) to diagnose substance use disorder with CMN mentor, Dr. Meera Grover.

Fast Fives: Opioid Use in Older Adults New resource from March VCF

This [infographic](#) highlights the March 24 Virtual Collab Forum session delivered by Dr. Lara Nixon and Pharmacist, Mareiz Morcos. Check it out!

Find more Fast Fives in the [CMN Community Library](#).



Collaborative Mentorship Network | www.cmnalberta.com

Alberta College of Family Physicians | www.acfp.ca



Alberta College of Family Physicians | #370, 10403-172 Street, Edmonton, T5S 1K9 Canada

[Unsubscribe](#) susan.wongarmstrong@acfp.ca

[Update Profile](#) | [Constant Contact Data Notice](#)

Sent by mentorship@acfp.ca powered by



Try email marketing for free today!